



Paraparaumu School

PRINCIPAL'S Corner

Dear families and friends of our school

Newsletters

From this week on we will be sending newsletters out every odd week in the term, i.e. 3, 5, 7 etc. A lot of the information in the newsletter is generic and doesn't change on a weekly basis. For day to day information please continue to use your child's class Facebook page and the Paraparaumu School Facebook page.

Dropping off and picking students up

Please be mindful when picking up and dropping children off at school. The road patrol students need clear lines of sight when operating the crossing. Your help with this as always is most appreciated.

Online enrolment

We are pleased to announce that we have launched an online enrollment system. The link can be found on our website under enrollment. This will allow you to upload documents such as birth certificates, immunization records, proof of address and visas or passports. I would encourage all parents who have pre-enrollments to use this system.

Nga mihi nui ki a koutou - warm regards to you all.

Steven Caldwell
PRINCIPAL

Student of the Week

Zoe **Room 9** **Year 7**

Zoe, you are an absolute delight to teach. You demonstrate all of the school PART values and have a kind and caring nature.

I love how hard you have been trying with your mathematics lately and you are willing to give challenging tasks your best effort. You should be proud of your hard work and resilience.

You treat your classmates and myself with respect and you are always willing to help others with their work.

You should be proud of your efforts this year. Keep up the good mahi!

Congratulations to our Whiz Kids	Room	P.A.R.T Certificates
Tawera	1	Caden
Glenise	2	Manutaki
Cruz	3	Capri
Zena	4	Xandy
Maia-Jade	5	Rocco
India	6	Holly
Meadow	8	Abel
Zion	10	Jahziah
	10	Lachlan
William	12	Paige
Gaia	14	Finn

Part Winners	Room
Erin	12

RAFFLE

In case you missed it, the PTA are running a quiz night **Thursday 10 August** from 6.30pm.

PTA QUIZ NIGHT FUNDRAISER

We are running raffles on the night, and have some amazing prizes. For those who can't make the quiz night, we are running a raffle prior to the quiz night, for the prize pack below. Tickets are available now on KINDO.

Get in touch at ptaparaparaumuschool@gmail.com if you have a prize you would like to donate to the raffle.



\$2 PER TICKET

\$5 FOR 3 TICKETS

You can buy for other people - just enter their name and contact phone number in KINDO.

FRIDAY PIZZA DAY - PTA FUNDRAISER

To our awesome parental community, just wanted to remind you of our on-going pizza fundraiser, and get the word out to new families to our school.

Parents can order slices of delicious Domino pizzas on KINDO. Orders need to be done by 6 PM each Thursday night and are delivered to your child's class each Friday for lunch. We would like to assure you there is **NO EXTRA SURCHARGE** presently on each order. The types of pizza are cheese, cheese without sauce, pepperoni, hawaiian, and ham and cheese. Prices range from \$2.00 to \$2.30 per slice.

This is the PTA's biggest fundraiser, and all money raised goes back into our school.

Some examples of what your ongoing support has/will go towards:

- A free bus ride for each class for an educational trip.
- Free nutritional lunch packs (fruit, muesli bars, ham rolls, biscuit) for any child who needs lunch.
- Glow sticks for the Matariki night
- All manner of bubbles, and the actual SLIP N SLIDE for our annual slip and slide event.
- The Easter eggs and prizes for the Easter Bonnet Parade.

Thank you to our amazing parental community for supporting this fundraiser. And the members of PTA, particularly Donna Smith and Alice Pritchard, for making this happen each Friday.

PARAPARAUMU SCHOOL PTA QUIZ NIGHT!!

The Paraparaumu School PTA Quiz Night is approaching, Thursday 10th August, 6.30pm at Boundary tap and kitchen (tickets available on kindo). It will be a fun night with loads of laughs so get a team together and come along!! We really need more teams for this event!!

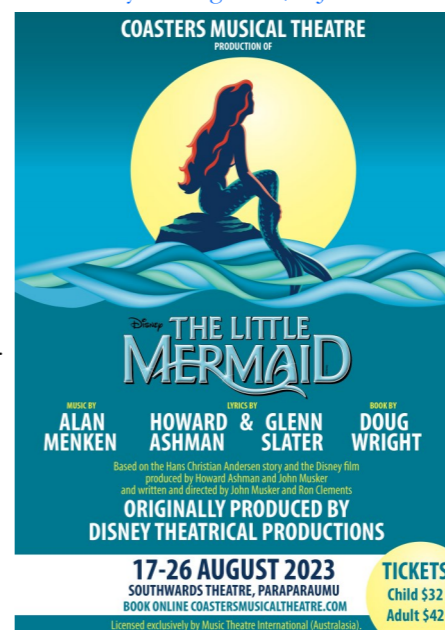
We will be having a raffle on the night and already have some amazing prizes. Don't worry, raffle tickets will also be available on kindo if you can't make it on the night.

We are putting together a grocery raffle basket and would love some support. If you are able to donate something, please bring it into school. We will have a drop box in the office. I have put an example of items. Crackers, pretzels, chips, tea, coffee, chocolate, lollies, biscuits, body wash, shampoo, face cloth, soaps, etc.

We are fundraising for providing every class in the school with a free bus ride to an educational trip. It will also help us to continue to provide school lunches to any child who needs kai. Thanks for your ongoing support!

Paraparaumu School PTA

Disney's The Little Mermaid swims into Kapiti this August! Perfect for all the family, don't miss this spectacular stage show at Southwards Theatre from 17-26 August. Tickets are on sale now at www.trybooking.co.nz/MJL



UPCOMING DATES

AUGUST

5	Art Splash
9	Rippa Rugby
10	PTA Quiz Night
29	Snr Winter Tournament (PPD 30th Aug)

YUMMY APPLE STICKER

Please keep collecting Yummy Stickers and passing on to your child's teacher. We can get some amazing sports gear plus the winning class gets a



BOARD MEETINGS 2023

23	August
20	September
25	October
29	November
20	December

TERM DATES 2023

Term 3	Monday 17th July – 22nd September
Term 4	9th October – 20th December (12 noon) 23rd October Labour day

TERM DATES 2024

Term 1	Wednesday 7th February – Friday 12th April <i>Easter Friday 29th March – Tuesday 2nd April Closed</i> Monday 29th April –
Term 2	Friday 5th July <i>3rd June – King's Birthday</i> Monday 22nd July –
Term 3	Friday 27th September <i>28th July Matariki</i> Monday 14th October –
Term 4	Friday 20th December (12 noon) <i>28th October – Labour Day</i>